

20

17

ANNUAL REPORT

Cornell Cooperative Extension | Onondaga County

The Atrium, 100 S. Salina St.
Syracuse, New York 13202

PHONE: 315-424-9485 | FAX: 315-424-7056



A YEARS REVIEW

Hello Citizens and Communities of Onondaga County,

We are happy to present you our 2017 Annual Report. This is meant to communicate what we accomplished from October 1, 2016 to September 30, 2017. This lines up with the Federal reporting year.

This Annual Report is also meant to convey the mission of CCE Onondaga; to bring research based knowledge from our Land Grant Universities to our citizens and communities for everyday practical use. It is our intent to improve the lives of our citizens, strengthen or communities and spurs on economic development.

We enjoy a wonder extension system in New York whereby each County Extension Associations decides on the programming that best serves their individual County. We also enjoy the benefit of sharing a common business platform with our fellow Associations that allows us to share resources and regional programming where appropriate.

The world keeps changing and CCE Onondaga changes its programming year after year to meet those challenges. In 2017 our programming focused on HAB (harmful algae blooms) on Skaneateles Lake. The tick, Lyme disease and deer program started 2 years ago has grown to include 8 different Onondaga communities, we expanded our food preservation program and continued our efforts in farmland protection. Our efforts to connect our Onondaga County farmers with our non-farming citizens continues to pay off with a tripling of farm visits on the ON Farm Fest farm tours.

Our Board and Staff want to express our deep appreciation for our volunteers, the support we receive from Onondaga County government, all of the Onondaga County Departments we work with, the City of Syracuse, New York Stat Ag and Markets, Cornell University. Without this support we could not deliver on our unique and vital mission. We also could not deliver our educational programs with collaborating with other organizations. They are listed in the back of this report, please read who they are.

Our 105th year is underway. 105 years of providing impactful and pragmatic education.

Please stay in touch with us by signing up for our Executive Email Newsletter. You will receive updates and notifications on our events and programming. To connect, sign up on our Facebook page or email us at onondaga@cornell.edu.

All the best,

David Skeval
Executive Director


David Duerr
Board President



**VIEWING THIS YEARS REPORT DIGITALLY?
USE THESE ICONS TO SKIP TO YOUR FAVORITE
PROGRAMMING SECTION!**

123,400
DIRECT
PROGRAM
PARTICIPANTS

426,236
INDIRECT
PROGRAM
PARTICIPANTS



6.6x
MULTIPLICATIONS OF
COUNTY DOLLARS



\$80,237
VALUE OF VOLUNTEER
HOURS

\$\$\$
90%
PERCENTAGE OF
REVENUE SPENT ON
PROGRAMMING



37
PROGRAMS
RUN

2017

FACTS & NUMBERS

STAFF DIRECTORY

EDUCATOR STAFF

4-H DEVELOPMENT

JULIANA QUARESMA, EXT. 241
2017 4H RESOURCE EDUCATOR

DEREK CONANT, EXT. 227
4H/NATURAL RESOURCES EDUCATOR

NATURAL RESOURCES & ENVIRONMENT

THOMAS CROSS, EXT. 229
NATURAL RESOURCES TEAM LEADER

KAREN BISHOP, EXT. 236
MASTER GARDENER COORDINATOR

CLARE CARNEY, EXT. 263
NATURAL RESOURCES EDUCATOR

SHANNON FABIANI, EXT. 232
WATER & ECOLOGY EDUCATOR

KRISTINA FERRARE, EXT. 231
FORESTRY RESOURCE EDUCATOR

KAYO GREEN, EXT. 233
URBAN AGRICULTURE EDUCATOR

KATHERINE KORBA, EXT. 230
COMMUNITY EDUCATOR

JUSTIN KWIATKOWSKI, EXT. 250
FORESTRY EDUCATOR, SAVE THE RAIN

MELANIE PALMER, EXT. 228
AG BUSINESS SPECIALIST

AARON ROSS*
URBAN AGRICULTURE EDUCATOR

ROY WIDRIG*
WATER QUALITY EDUCATOR

NUTRITION & COMMUNITY FOOD SECURITY

KATHLEEN BUMP, EXT. 253
NUTRITION TEAM LEADER

KATHLEEN DISCHNER, EXT. 239
NUTRITION ISSUE LEADER

NUTRITION EDUCATORS:

ANITA BONO, EXT. 238

AMIE CHAMBERS, EXT. 256

KIRSTIN LYONS, EXT. 237

KATIE OJA, EXT. 254

ADMINISTRATIVE STAFF

DAVID SKEVAL
EXECUTIVE DIRECTOR

HILLARY CHARTRON-BARTHOLOMEW, EXT. 234
ASSOCIATION ADMINISTRATOR

DIANA LAMSON, EXT. 222
FINANCE MANAGER

MICHEAL MATHEWS-ROGERS, EXT. 225
ACCOUNT REPRESENTATIVE

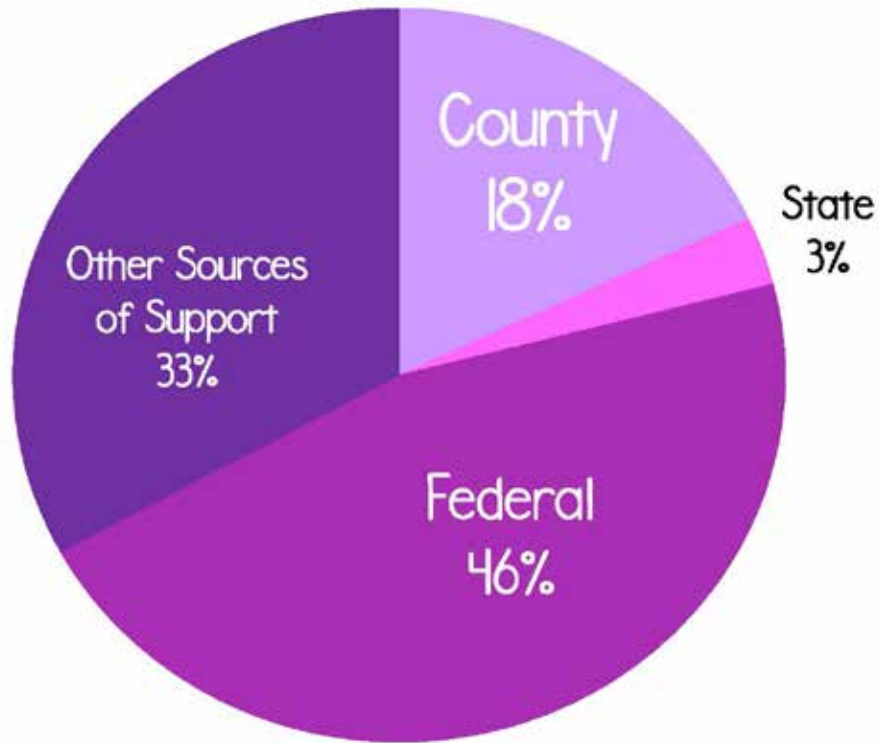
MICHELLE BOUCHARD, EXT. 226
PROGRAM ACCOUNTANT

AUDREY CLARK, EXT. 260
FINANCE ASSISTANT

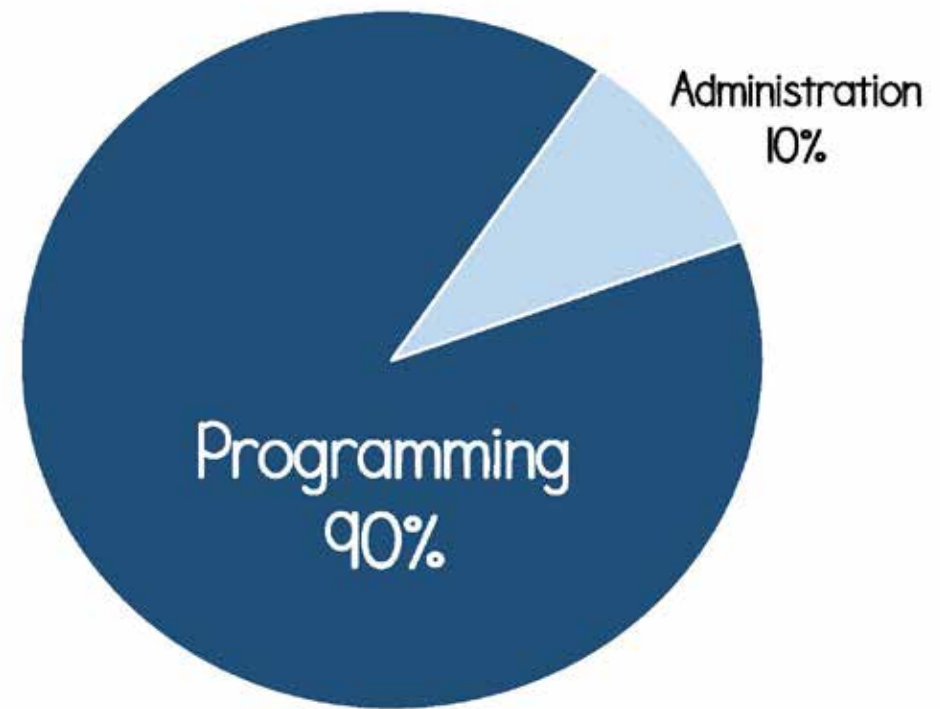
*DENOTES PERSONS NOT CONTINUING ON STAFF IN 2018

Cornell Cooperative Extension actively supports equal educational and employment opportunities. No person shall be denied admission to any educational program or activity or be denied employment on the basis of any legally prohibited discrimination involving, but not limited to, such factors as race, color, religion, political beliefs, national or ethnic origin, sex, gender/gender identity, transgender status, sexual orientation, age, marital or family status, protected veterans, and individuals with disabilities. Cornell Cooperative Extension is committed to the maintenance of affirmative action programs that will assure the continuation of such equality of opportunity.

2017 RESOURCES



2017 ALLOCATION



Our Mission:

CORNELL COOPERATIVE EXTENSION PUTS KNOWLEDGE TO WORK IN PURSUIT OF ECONOMIC VITALITY, ECOLOGICAL SUSTAINABILITY AND SOCIAL WELL-BEING. WE BRING LOCAL EXPERIENCE AND RESEARCH BASED SOLUTIONS TOGETHER, HELPING NEW YORK STATE FAMILIES AND COMMUNITIES THRIVE IN OUR RAPIDLY CHANGING WORLD.

NUTRITION & HEALTH



STRIKING FACTS IN ONONDAGA COUNTY:

- Disparities in health and health care among racial, ethnic, and underserved populations affect health outcomes.
- 63% of adults and 33% of children are either overweight or obese
- Obesity is a significant risk factor for cardiovascular disease, diabetes, cancer, liver and kidney disease, sleep apnea and depression.
- 15% of persons are living at or below the poverty level in Onondaga County with 40% of residents living in the City of Syracuse in poverty.



- Poverty impacts access to healthy foods and is a risk factor for chronic diseases.
- 16% of residents use the Supplemental Nutrition Assistance Program (SNAP) to purchase food.
- 13% of residents in Onondaga County are food insecure and do not have a reliable access to sufficient quality of affordable nutritious food.





Educate using evidence-based curriculums to promote healthy food choices and physical activity to improve health and prevent chronic disease through a variety of hands on, interactive age appropriate curriculums. (you may or may not want to list the curriculums)

- Eat Healthy Be Active
- Eat Smart Live Strong
- Catch Curriculum
- Eating Smart Being Active
- Great Garden Detective
- Media Smart Youth

Serve low income youth, adults and seniors in locations where they eat, learn, live, play, shop, and work.

- Schools
- Parks & Recreation
- Food Pantries & Soup Kitchens
- Workforce Development Sites
- WIC
- Senior and Adult Housing
- Treatment & Rehabilitation Centers
- Community and Health Fairs
- CNY Regional Market
- NYS Fair

Nutrition programs to help low-income audiences put the recommendations of the 2015 Dietary Guidelines for Americans into action.

- Make Half Your Plate Fruits and Vegetables
- Drink Fewer Sugary Beverages
- Enjoy Your Food but Eat Less

Yearly, ESNY educators reached 34,705 individuals (8,252 in Onondaga County) living at or below the Federal Poverty level residents across the 8 county Southern Tier Region lead by Cornell Cooperative Extension Onondaga County.

FOOD PRESERVATION

CCE Onondaga offered a variety of food preservation classes and workshops to the public throughout 2017, including canning, fermentation, and kolaczki holiday cookie making.

These classes focused on recipes for fresh, homemade foods, healthy substitutions, food safety, and preparation.





4-H YOUTH DEVELOPMENT

In 2017, 4-H in Onondaga County delivered about 700 activities about STEM, Civic Engagement, and Healthy Living, and reached about 500 youth involved in the clubs and school enrichment. 4-H'ers learn life skills while developing confidence as they progress through self-guided projects and community service. 4-H is growing in youth programming in urban after-school programs.

Our goal is to expand our 4H programming into our urban communities while maintaining strong programming in rural communities. In our urban initiatives, we promoted the Citizen U Program and 4-H After-school Program at Syracuse Academy of Science, fostering hands-on STEM (Science, Technology, Engineering and Math) and Natural Resources activities such as "Where does your food come from? Where does your water come from?"

We can't forget our community partners and **80 dedicated adult volunteers** that continue to donate their time and expertise to make CCE Onondaga's youth programming a success. **Thank you for all you do.**

Our 4-H clubs continue to set the bar high for youth development with programs focused on mastering horse education, goat management, photography, as well as cooking, sewing, public speaking, and leadership skills. We believe that life learning skills are important to create passionate leaders who are spring-loaded for engaging in their communities.

4-H believes true leaders aren't born,
they're grown!



URBAN AGRICULTURE

SYRAPP

Our CCE Urban Agriculture educator provides support for the *Syracuse Refugee Agriculture Partnership Program* which responds to the needs within our local refugee/New American community for increased food production opportunity through urban gardens in order to increase food security, create safe spaces for cultural exchange, and provide economic opportunities.



KIRK PARK EDIBLE GARDEN PROGRAM

The Kirk Park edible gardening program collaborates in partnership with the Syracuse City Parks Department, the Kirk Park Community Center and CCE Onondaga in order to provide successful youth garden programming. 2017 was our 4th successful growing year of the garden program that provides youth an opportunity to learn how to cultivate and maintain an edible garden. CCE Onondaga's urban agriculture educator and Master Gardener Volunteers provided 14 hands-on garden based learning sessions to 15 youth participants' ranging from 6-13 years of age.

This year the harvest was bountiful from the four raised vegetable garden beds. Students were able to harvest and enjoy: strawberries, currants, gooseberries, cucumbers, carrots, beets, beans, melons, several types of greens and herbs throughout the growing season. The program covered concepts with students dealing with seeds, parts of plants we eat, planting/spacing of plants, care and maintenance, harvesting, composting, insects, pollination and of course tasting. Fruits and vegetables that were sampled by the students this summer included fresh berries and veggies, currant ice cream, strawberry jam, basil pizza and zucchini cupcakes. We culminated the program with a Fall Harvest celebration by sampling three types of cooked greens that the children grew: collard greens, kale and rainbow chard. Students also took home pumpkins, butternut squash, Kale and Collards to share with their families during this bountiful harvest season.



AGRICULTURE



Onondaga County is the tenth largest agricultural county in New York. CCE Onondaga Agriculture programs assist our agriculture producers within the County by conducting workshops, fielding questions and one-on-one farm visits, with the goal of keeping these farm businesses sustainable. There are nearly 450,000 people in Onondaga County, yet only 1 % are farmers. CCE Ag programs also work to educate the general population to increase their awareness of where their food comes from three times a day.

DAIRY & FIELD CROP RESEARCH AND EDUCATION:

Dairy and field crops are nearly half of Onondaga's \$300 agriculture economy. CCE Onondaga's membership on the Dairy and Field Crops Team provided 44 different workshops of Onondaga County farms in diverse subject matters. From cow comfort to improved crops, the sharing of research keeps our Onondaga farms profitable.

FARMLAND PROTECTION

Farmland protection is an important priority identified by County stakeholders. CCE Onondaga continues to work with the County Agriculture and Farmland Protection Board, Syracuse -Onondaga County Planning Agency and local Land Trusts to protect our farmland. Workshops were conducted to educate and assist farmland owners on the NY State Farmland Protection Implementation Grant Program and conservation easements. As a result, Onondaga County farmers have produced several winning projects during each round of funding. The awards provided a funding fusion for farm modernization as well as securing Onondaga farmland for generations to come.

YOUTH TRACTOR SAFETY

CCE Onondaga conducted the Youth Tractor Safety Course with 11 participants enrolled. Seven of these met the age requirement to become certified. All seven passed the written and driving tests and were certified. Two of the certified youth went on to compete at the 2017 NYS FFA State Tractor Driving Contest in Seneca Falls, placing 2nd and 9th out of 23 contestants!



FARM TOURS

CCE, in collaboration with the Onondaga County Agriculture Council, held the second annual OnFarm Fest. Eight family farms opened their doors for the one day event and over 4,500 people toured their farms to see what farming is all about. Visitors that participated in OnFarm Fest came away with an appreciation and sense of stewardship for those who feed us. CCE Onondaga assisted with the annual Agriculture Awareness Day, an event at Tully Elementary School for fourth grade students, which is held on a local farm. CCE staff helped with various educational stations that over 75 children visited to learn about farming.



AGRICULTURE LITERACY WEEK

This is an annual event that CCE coordinates for Onondaga County. An agriculture based book is read to second grade classes throughout the County by volunteer readers. The Grapes Grow Sweet was read in 74 classrooms to 1403 students! This program is a great opportunity to teach youth about the agriculture of New York State.

WATER QUALITY

YOUTH ON THE FLY

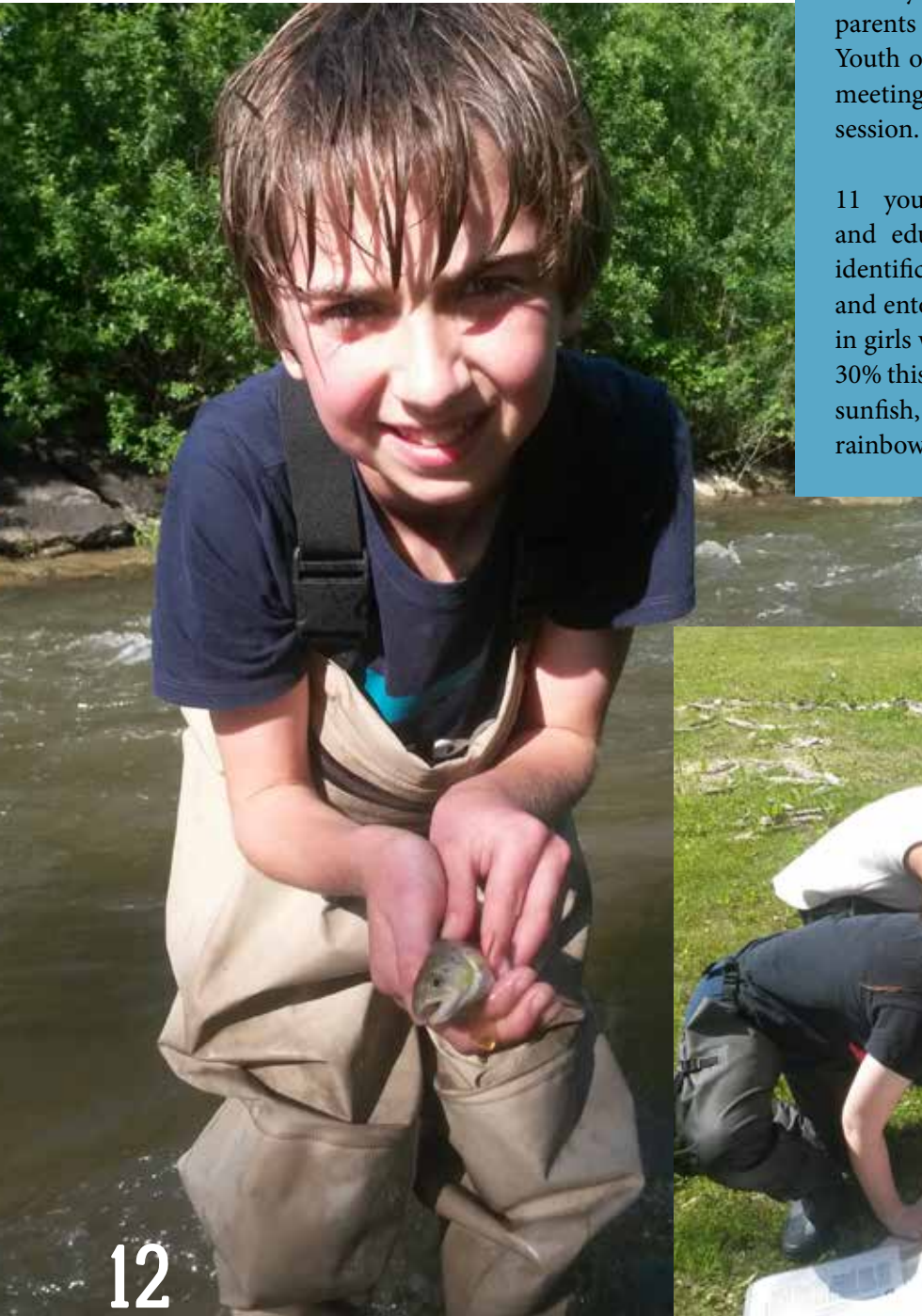
CCE Onondaga partnered with Onondaga County Libraries, and Onondaga County parents to engage county youth, ages 8-15, in Youth on the Fly for a duration of five weeks, meeting once per week for two hours each session.

11 youth and 2 adults were instructed and educated on fly fishing, fly tying, fish identification, water quality, stream ecology and entomology. This year we had an increase in girls who participated from 17% last year to 30% this year. Many fish were caught, including sunfish, small mouth bass, brown trout and rainbow trout.

PROJECT WATERSHED

Is a water quality education and community outreach program that engages Onondaga County high schools, middle schools, and teachers in water quality monitoring, stream ecology, pollution, and conserving local streams. The program has been developed to meet NYS STEM (science, technology, engineering and math) education requirements.

15 stream sampling events
10 different water bodies
11 schools & organizations
506 youth
74 adults



With approximately 50 active Master Gardener Volunteers donating over 3000 hours in 2017, Master Gardeners were busy sharing their gardening knowledge with the local community in a variety of settings.

There were over 2200 visitors to our booth at the New York State Fair, 669 people stopped by our table at the Regional Market each week for gardening information and to ask questions, over 500 people visited our booth at the Lavender Festival with information on invasive species, and MGV answered 170 questions from the Horticulture Hotline. Approximately 175 people attended our garden tour of nine MGV gardens. Master Gardener volunteers gave 32 presentations to garden clubs and other organizations on a wide range of gardening topics.

This year Master Gardeners worked in 5 gardens: They maintain a native plant demonstration garden at Onondaga Lake Park and a large vegetable garden at the Rosamond Gifford Zoo. Volunteers worked with youth in a school garden, at a local community center, and at the zoo during the summer camp program. In addition, volunteers gardened with seniors at a local community center growing vegetables and herbs indoors using a lighting system.



HORTICULTURE



FORESTRY

COMMUNITREE STEWARDS

In 2017, 18 new volunteers joined the program. Throughout the season Tree Stewards provided hands-on training on 7 tree pruning projects, improving the form and structure of more than 300 young urban trees. Tree Stewards participated in 5 community events planting 129 new trees in the City and County.

These Stewards along with 26 Alumni participated as crew leaders throughout the year, assisting with community plantings, other urban forestry activities and sharing their knowledge with the community.



The Brighton Neighborhood Tree Planting Event resulted in 159 volunteers planting 79 trees in 4 hours on October 28th, 2017. The volunteer participants included Neighborhood Residents, students and professors from SUNY ESF, OCC, and SU, Master Gardener Volunteers, Area Business Employees, Communi-Tree Steward volunteers, and Certified Arborists from National Grid. For the event, 11 expert crew leaders were trained to lead groups of volunteers during the planting.


Throughout the year, CCE and members of the Onondaga Earth Corps conducted door to door outreach; knocking on 651 doors, and directly speaking with 187 residents to obtain 180 approvals, 35 of which have been adopted.



VOLUNTEER PLANTING EVENTS

In 2017 the STR team held 5 community tree planting events with 230 volunteers. These events resulted in 802 volunteer hours! Our annual Arbor Day event was held at McKinley-Brighton Elementary School with eleven 4th and 5th grade students who learned about the importance of trees as green infrastructure, their beneficial impacts on our watershed, and concluded with the planting of 13 trees on the school's property.

SKANEATELES LAKE




As climate and the ecosystem continue to change, more study than ever is needed on the effects of these changes on our regional forests, fields and streams. The Skaneateles Lake Watershed faces many threats resulting from development, invasive species and climate change, and citizen scientists are the first line of defense in combating these issues.

CCE Onondaga recruited volunteers to get involved with ecological studies and water quality control projects in 2017. These projects included: water quality and invasive species monitoring, mapping the presence of hemlock trees and the occurrence of hemlock woolly adelgid, and replanting trees where hemlocks have been removed due to hemlock woolly adelgid infestations. Other less-intensive volunteer opportunities included monitoring of stream gauges, ecological calendars and more.

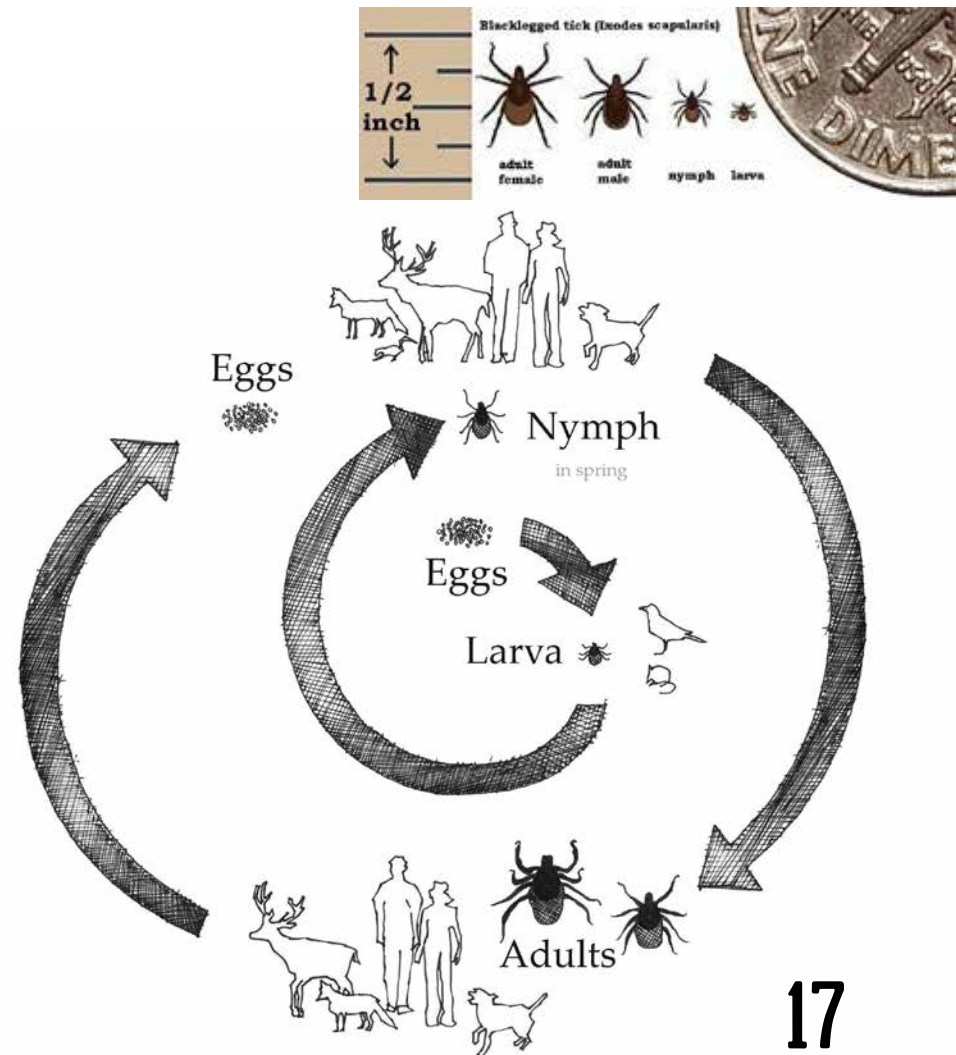
Revamping a Skaneateles Lake Adopt-a-Shoreline program was also a high priority. While pollution and dumping is not a problem on Skaneateles Lake, it never hurts to have a crew of lake residents ready and available to monitor the shorelines for discarded trash, shoreline and streamside erosion issues and other curious developments along the shore. This should not be limited to the lakeshore proper, but also along the tributaries entering the lake.

CCE Onondaga helped facilitate the training of community groups and lane associations in regards to these projects.



TICK EDUCATION

In response to the growing concern about ticks and tick-borne illness in Onondaga County, CCE educators and Master Gardeners provided enhanced educational tick workshops and presentations. We reached out to schools, libraries, and groups to schedule workshops which focused on personal protection and tick habitat management in yards and play areas to reduce the risk of human-tick interactions while enjoying the outdoors. CCE Onondaga is continuing to provide schools, community centers and other community partners educational tick resources and workshops upon request. CCE Onondaga Natural Resources Educators help residents understand the complex relationship between deer and tick populations as well as provide education about both, as part of the community education process. Because CCE Onondaga has a close collaboration with the NYS IPM program, we are in a strong position to bring the most up-to-date information and resources about ticks to the residents that we serve.

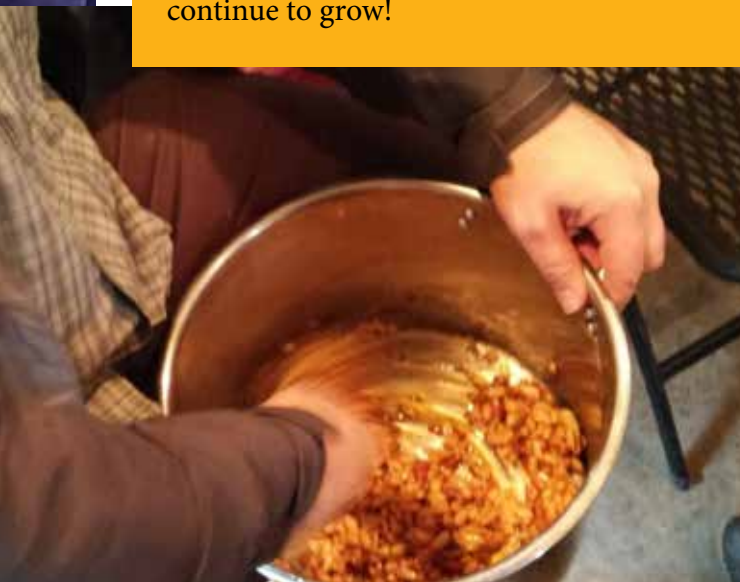


MAPLE



In 2017, CCE Onondaga's Forestry program continued to bring the expertise of the Cornell Maple Program to local producers. Steve Childs visited Onondaga County and delivered a workshop focused on maple confections, which expanded the skill set of maple producers. On a cold, snowy morning in December, maple producers started with a few gallons of syrup and made maple cream, granulated sugar, molded candy, coated peanuts, maple marshmallow, and cheesecake. More than a cooking class, this workshop discussed the research findings from Steve's work in collaboration with test kitchens to make the smoothest, creamiest and most stable maple products possible.

CCE's Forestry Program Specialist continues to bring maple education into the city of Syracuse schools by visiting classrooms to share the wonders of maple in the spring with local students. Students learn about identifying maple trees, why sap runs, and how maple syrup is made. Classrooms visit their campus maple trees and tap them together to witness the miracle of sap running, tasting the liquid fresh from the tree. Corcoran High School collaborated with CCE and City Parks to host "Maple Day" where families came to snowshoe into Elmwood Park and visit a real, urban sugar bush! We hope this program will continue to grow!



FUNDERS, PARTNERS, SUPPORTERS & DONORS

ALDEN STREET FOUNDATION
ALLIANCE FOR COMMUNITIES
TRANSFORMING SYRACUSE
AMERICAN DAIRY ASSOCIATION
BREWERTON FOOD PANTRY
CHITTENANGO GARDEN CLUB
CITY OF SYRACUSE WATER DEPT
CITY VIEW GARDEN CLUB
CORNELL UNIVERSITY
CORNELL GARDEN BASED LEARNING
CNY COMMUNITY FOUNDATION
CNY LATINO
FAIRMOUNT GARDEN CLUB
FARM CREDIT EAST
FINGER LAKES INSTITUTE
FINGER LAKES LAND TRUST
FINGER LAKES PARTNERSHIP
FOR REGIONAL INVASIVE SPECIES
MANAGEMENT
FOOD BANK OF CENTRAL NEW YORK
HAROLD UNDERWOOD
HELPING HANDS URBAN FARM
HOBART & WILLIAM SMITH COLLEGES
HUNTINGTON FAMILY CENTER
IHEARTMEDIA
IN GOOD HEALTH
JOHN HALLIHAN
LERNER CENTER FOR PUBLIC HEALTH
PROMOTION AT SYRACUSE UNIVERSITY

LEMOYNE LIBERTY PARTNERSHIP PROGRAM
LOCKHEED MARTIN CORPORATION
NATIONAL 4-H FOUNDATION
NATIONAL GRID
NEW YORK STATE AG & MARKETS
NEW YORK STATE DEC
NEW YORK STATE FAIR
NEW YORK STATE OFFICE OF PARKS,
RECREATION & HISTORIC PRESERVATION
NYS OFFICE OF TEMPORARY DISABILITY
(OTDA)
NYSERDA
NOJAIM BROTHERS SUPERMARKET
ONONDAGA COUNTY
ONONDAGA COUNTY AG COUNCIL
ONONDAGA COUNTY COMMUNITY
DEVELOPMENT
ONONDAGA COUNTY DEPARTMENT OF
SOCIAL SERVICES
ONONDAGA COUNTY FARM BUREAU
ONONDAGA COUNTY HEALTH DEPT
ONONDAGA CO. PUBLIC LIBRARY SYST.
ONONDAGA COUNTY SOIL & WATER
ONONDAGA COUNTY SWCD
ONONDAGA EARTH CORPS
ONONDAGA COUNTY WEP
PEACE
PENN STATE UNIVERSITY
PRICE CHOPPER

REFUGEE & IMIGRANT SELF-EMPOWERMENT
(RISE) PROGRAM
SHARE OUR STRENGTH
STEPHEN FORWARD
SUNY ESF
SUNY UPSTATE HOSPITAL
SYRACUSE CITY SCHOOL DISTRICT
SYRACUSE DEPARTMENT OF PARKS,
RECREATION, & YOUTH PROGRAMS
SYRACUSE GARDEN CLUB, INC.
SYRACUSE ROSE SOCIETY
SYRACUSE UNIVERSITY
TOPS MARKET
TRACTOR SUPPLY COMPANY
TULLY FFA CHAPTER
USDA-NIFA
WEGMANS
WIC
WOMEN'S GARDEN CLUB OF
BALDWINVILLE
YMCA/YWCA

SPECIAL THANKS TO OUR VOLUNTEERS!
4H VOLUNTEERS AND CLUB LEADERS
BOARD OF DIRECTORS
COMMUNITREE STEWARDS
MASTER FOREST OWNERS
MASTER GARDENERS

Cornell Cooperative Extension Onondaga County

2017 BOARD OF DIRECTORS

RYAN BEAUFORD
Syracuse University

CECELIA CANNON
Bousquet Holstein PLLC

DAVID DUERR
Empower Federal Credit Union

JANET FALLON
Retired, Dairy One Cooperative

STEVE FORWARD
Jacobs & Forward

FRANKLIN FRY
American Heart Association

ALEXANDRA GORSKI
M&T Bank

DONALD NEUGEBAUER
FP School Board President

DAN PALLADINO
Palladino Farms/Farm Bureau

BRIAN PLATT
O'Brien & Gere

BARBARA SABATINO
LP&M Advertising

SUE SMITH
Tre-G Farms

HONORA SPILLANE
Onondaga County Office of
Economic Development

STATE EXTENSION SPECIALIST
PAUL O'CONNOR

COUNTY LEGISLATORS
MIKE PLOCHOCKI
TIM BURTIS

EXECUTIVE COMMITTEE

PRESIDENT
DAVID DUERR

VICE PRESIDENT
BRIAN PLATT

TREASURER
ALEXANDRA GORSKI

SECRETARY
FRANKLIN FRY

2018 BOARD MEMBERS ELECT

STEPHEN KANKUS

MELANIE VILARDI

DOROTHY CLARK

ANTHONY EMMI

WWW.CCEONONDAGA.ORG

- FOLLOW US -



CCE Onondaga



@cceonondaga